

DESIGN PROGRAM

1. PROJECT GOALS AND VISION

- a) **Project purpose:** The road rehabilitation project requires relocating the 1944 Copake Memorial Clock (a National Register-listed site) to a new dedicated public park. The Clock is a beloved symbol of our community, commemorating local veterans who fought in the nation's wars since WWI. The Copake Memorial Clock will retain its visual prominence in the landscape and as a commemorative site. The new Park will meet the community's aspirations for a new public space that revitalizes the hamlet center and fosters community spirit.
- b) **Key objectives:** Taken from Copake's 2011 Comprehensive Plan, RAC memo dated July 14, 2025, and HPC's June 7, 2025 presentation to RAC.
- The MOA 'T-Intersection Alternative Rendering' was used as the design starting point, with public spaces developed to include a Viewing Area for the Interpretive Signage, a Memorial Clock area, public seating, and gardens.
 - The relocated Memorial Clock and site will be visually prominent and a focal point, with space around the Clock serving as a place for community reflection.
 - The park design shall be appropriate to 1944, the year the Memorial Clock was built. It shall also capture the hamlet center's prior 100-year historic use as a "community square which is the heart of town".
 - The new park will be an attractive public space that fosters social connection and walkability, and a pedestrian destination for residents and visitors.
 - The park design shall recapture the historic character, verdant landscape, picturesque and rural charm of historic Copake.
- c) **Inspiration:**
- Copake's historic small-town character including "The Square" and "The Hub" as documented in historic photographs and ephemera.
 - Original design sketches and old photos of the Memorial Clock site.

2. FUNCTIONAL REQUIREMENTS

- a) **Site considerations or restraints:**
- New Copake Memorial Clock relocation will comply with the terms of the State issued MOA dated November 2024.
 - Preserve open views to the Memorial Clock from Church and Main Streets
 - Establish a visual screen/physical barrier between the Park & Clocktower Pub
- b) **Key Spaces and Activities:**
- Memorial Clock space – a reflection area with seating for visitors
 - Walkways – pedestrian circulation through and around the park with seating
 - Viewing Area – for the interpretive signage and for small ceremonial and celebratory activities

Copake Historic Preservation Committee
COPAKE MEMORIAL CLOCK PARK
September 19, 2025

- Green spaces – for physical comfort, shade, year-round visual interest
- Accommodation for lighted Christmas trees and holiday displays
- Public access to restroom facilities

c) Design criteria:

- Durable materials such as cast-iron for pole lighting and benches
- Material integrity including real wood and metals
- ADA accessible.

d) Materials & Products: Note: B&L shall present a materials palette, and submit physical samples and product cut sheets for client review and approval.

- Sidewalks, Hardscape and Granite curb
- Lighting
- Park benches (see World's Fair Bench 1938, manufacturer Kenneth Lynch & Sons, CT, USA)
- Street furniture - trash receptacles, bike racks, bollards
- Interpretive sign for Memorial Clock history
- Wayfinder signage (establish a single town-wide system)
- Detectable warning surface at sidewalk curb cuts (color and material TBD)
- National Register historic marker. Note: Numerous types are used in Copake

e) Required Infrastructure:

- Electric hook-ups for pole lights and path lights
- Electric outlet(s) for holiday lights, and equipment
- Water source for landscape maintenance
- New landscape will need remediated soil to support new plantings

4. PROJECT IMPLEMENTATION - TBD

- Determine responsible parties
- Project Budget
- Project timeline
- Park maintenance

Attachments:

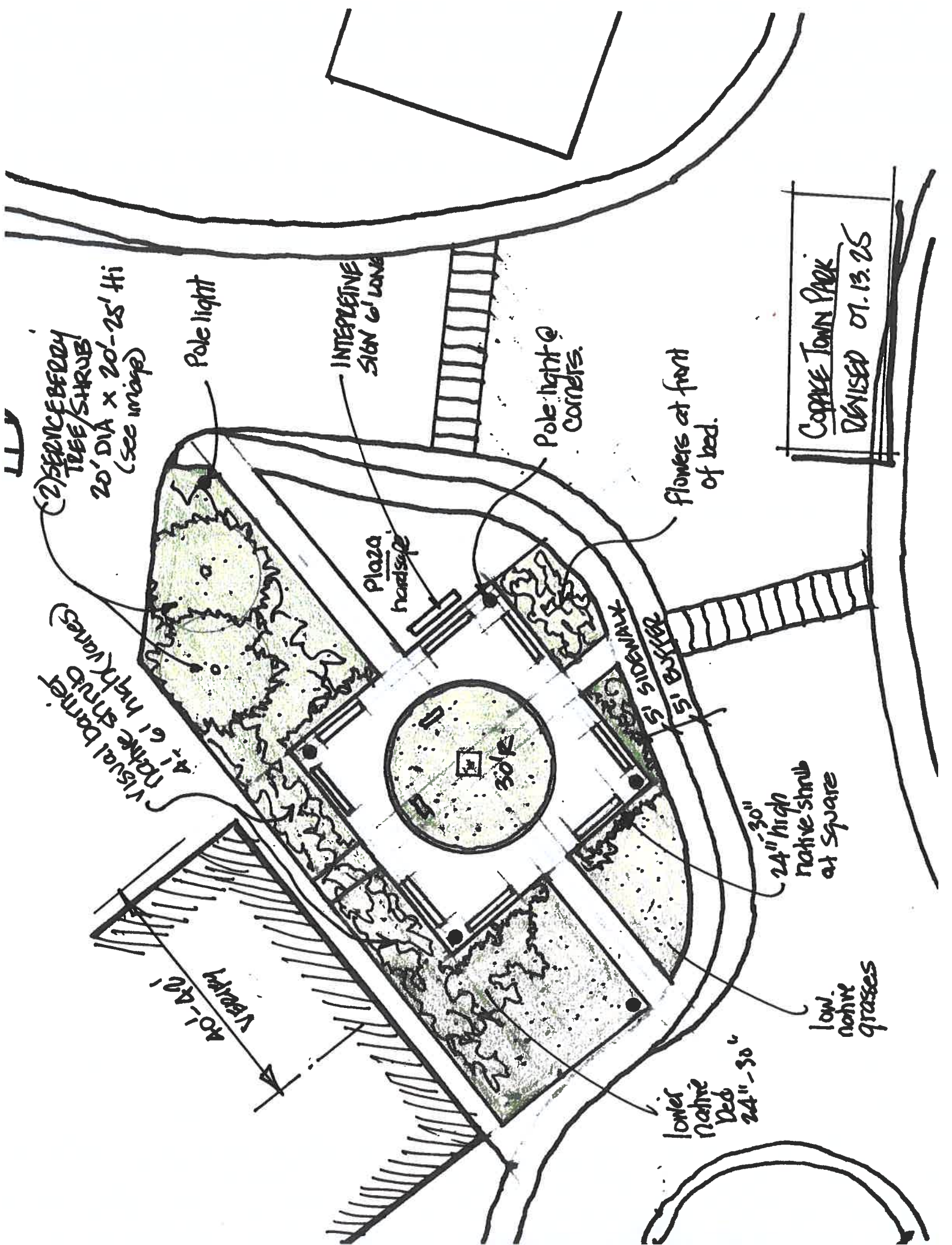
- Memorial Clock Park – Design Program
- Memorial Clock Park Renderings
- Memorial Clock Park Plan
- Historic inspiration photos



Copake Memorial Clock Park
A History-Inspired Vision Proposed By The Historic Preservation Committee
September 2018



Copake Memorial Clock Park
A History-Based Vision Proposed By The Historic Preservation Committee
September 2022



(2) SPINE BERRY TREE / SHRUB
20' DIA x 20'-25' Hi
(see map)

Pole light

INTERPRETIVE SIGN @ LANE

Pole light @ Corners.

Flowers at front of bed.

Plaza
hardscape

SOLE

SIDEWALK
SIDEWALK

Visual barrier
4'-6' high (lanes)

40'-40'
Visual barrier

24"-30"
native shrub
at square

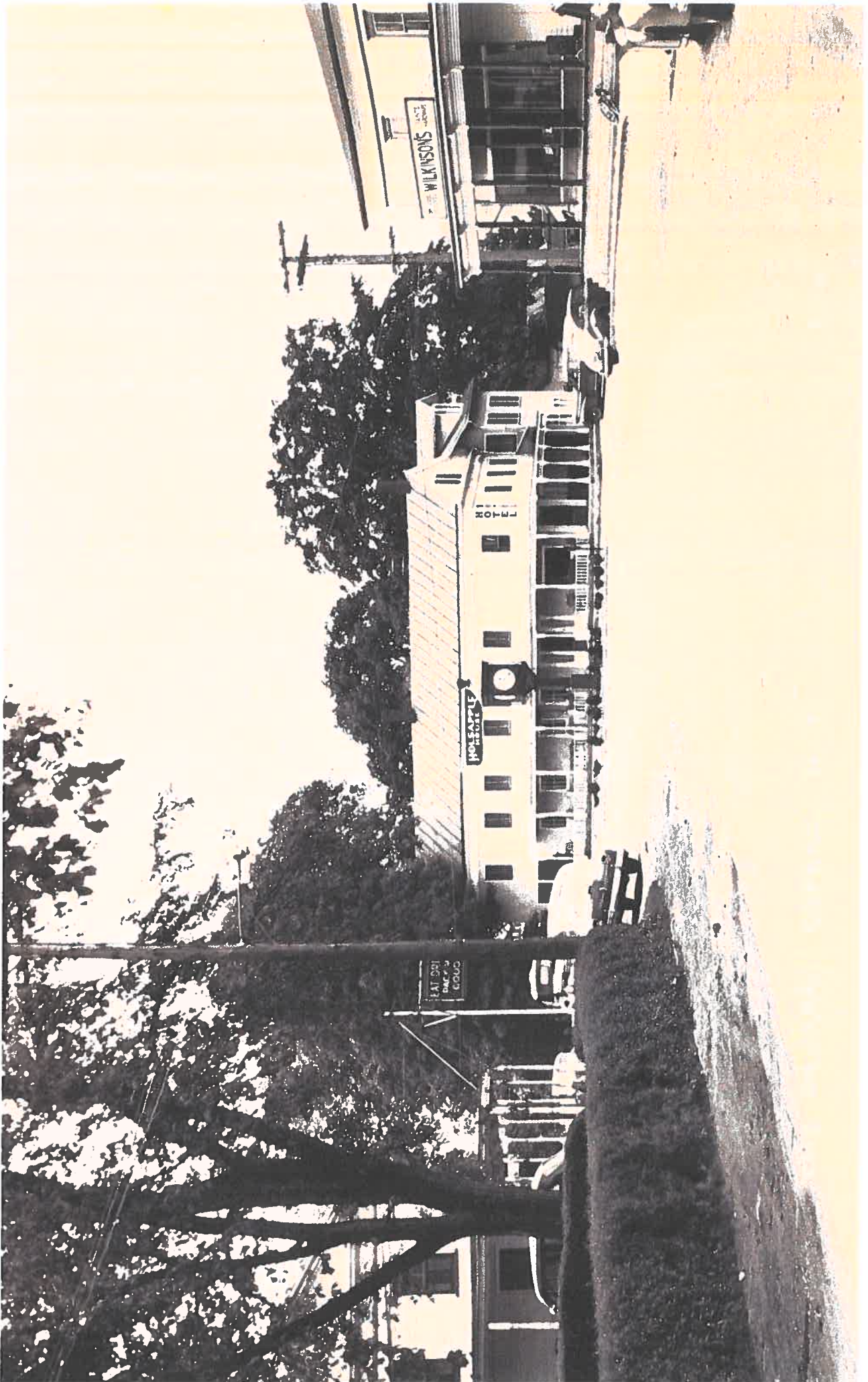
low
native
bed
24"-30"

low.
native
grasses

COPPICK TOWN PARK
REVISED 07.13.25

A-1404. The Square, Copake, N. Y.

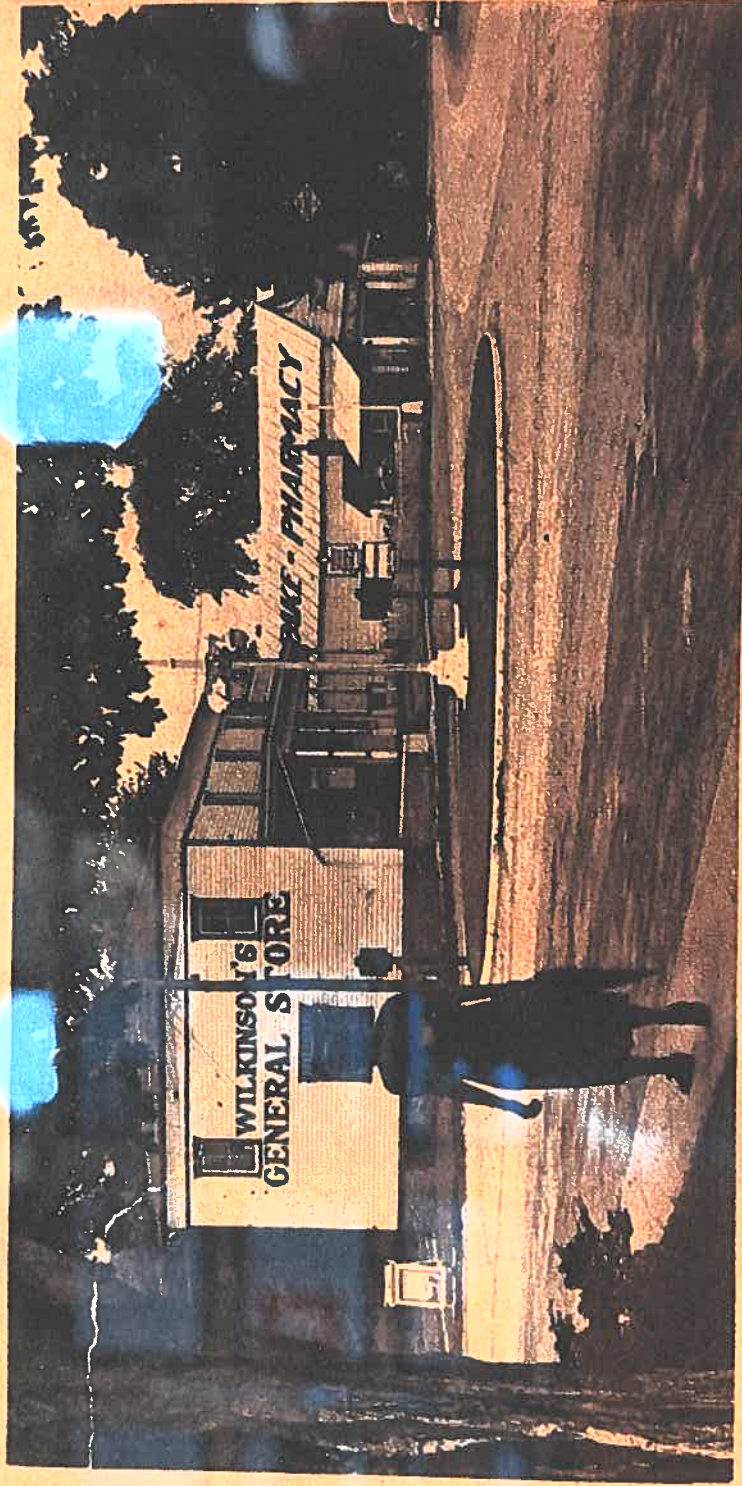




Fortress lands in England and a wounded pilot steps out to be acclaimed. He is from Midway, Ky.) (Another one comes in and the youth who crawls from the ball turret is from Greenwood, Miss.).

These are not the towns which foreign envoys visit to make reports on American morale. These are not the towns on which reports were based that Americans "would not fight," that they were "flabby" and disunited. These are towns which other Americans scarcely heard of, yet they knew they were there. They knew that the small towns, from which the big cities gathered strength for years, were standing by, ready to supply another Washington or Lincoln or Grant or a Calvin P. Kelly jr. Main street is backing up Broadway to the limit.

Jesse Head, of Co-pake, never thought much about his morale. He takes his Americanism like crops. His oats always come up green.



town superintendent to teach a class to fight for Mrs. McGee town doesn't

to J. Heffernan

There Is a Community Square Which Is the Heart of Town

THIS WEEK

Magazine Section

September 2

Sunday
ple Ho
pake fo
the din
ring a d
mer vis